



Olimenlaan 27
2460 Lichtaart
tel : 014/55 75 60
fax : 014/55 75 59
mail: alain.schuermans@skynet.be

Provincie : Antwerpen

Stad : Geel

afd 3 , sie K , nrs 921b6, 921h4, 921k4, 921b2, 921b5, 921e3, 921t5, 921s5,
deel920h8 , deel920e6, deel920r7 , deel920i7, deel921g4 , deel 921d6

Verkaveling a/d Dennenstraat

Versie d : electriciteitscabine
Versie e : zonder aquafin
Versie f : 921d6 / deel bijkomend lot
Versie g : aanpassing zachte wegenis

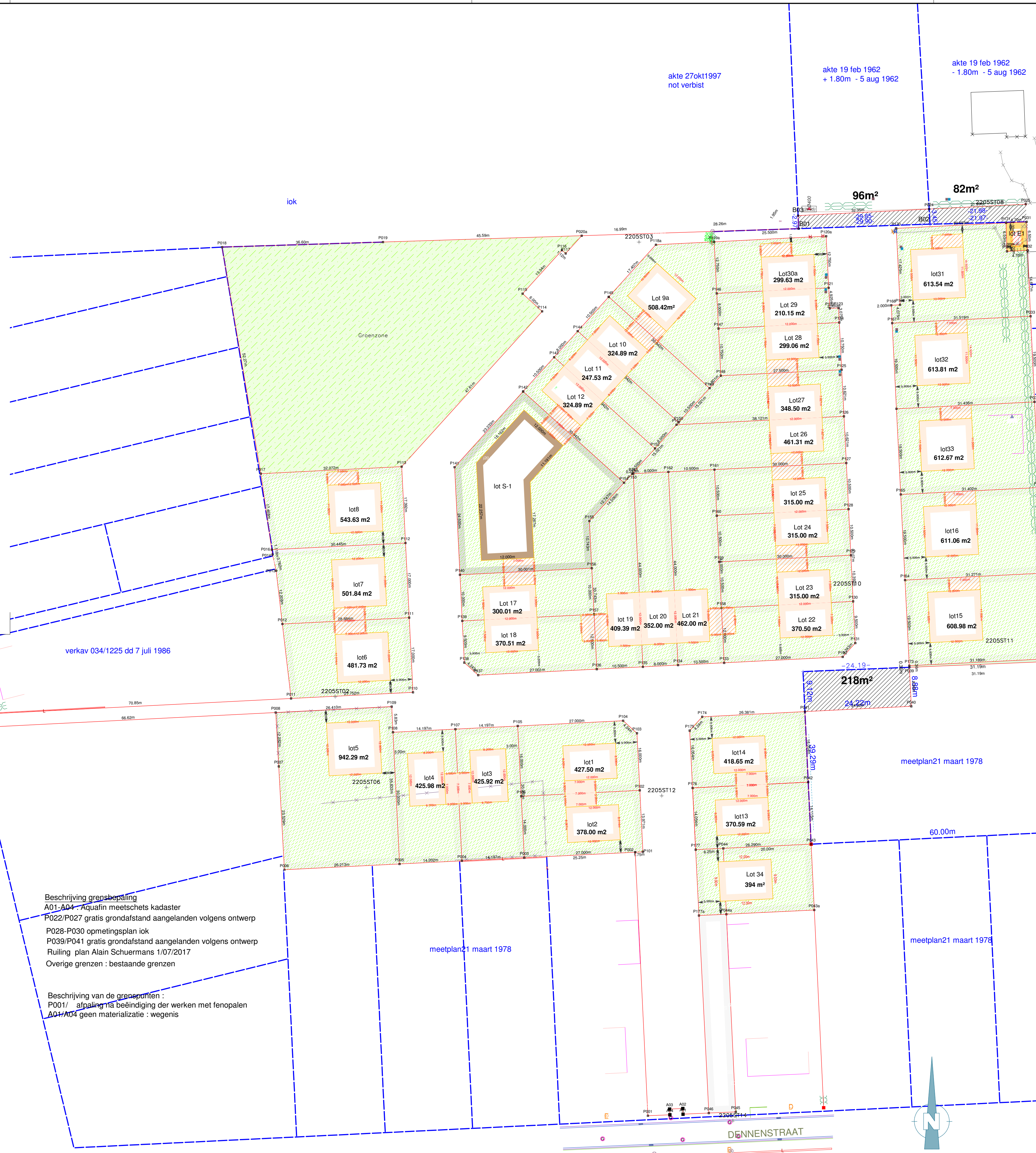
Verkavelingsplan wijziging

Plan opgemaakt en opgemerkt
door ondergetekende
Bekijldig landmeter lan 051180
Alain Schuermans

Dossier : 2205 Datum: 27/02/2018 plan :1/1 schaal : 1/500

- te behouden natuurzone (grondafstand)
- Tuin
- Perceel
- Bouwzone
- Zone voor carport
- Zone sociale huisvesting
- Perceel Sociale huisvesting
- electriciteitscabine (lotE1)
- Zone wegenisontwerp (grondafstand)
- Zone Verkaveling

Kadaster Liggingsplan



Beschrijving grensbepaling
A01-A04 - Aquafin meetschets kadaster
P022/P027 gratis grondafstand aangelanden volgens ontwerp
P028-P030 opmetingsplan iok
P039/P041 gratis grondafstand aangelanden volgens ontwerp
Ruiling plan Alain Schuermans 1/07/2017
Overige grenzen : bestaande grenzen

Beschrijving van de grondbanden
P001 - afpakkinga beëindiging der werken met fenopalen
A04-A04 geen materializatie : wegenis

Coördinatenlijst

Nr	X	Y
P101	194595.666	201772.258
P102	194594.967	201786.240
P103	194594.318	201799.224
P104	194591.172	201802.070
P105	194567.202	201800.872
P106	194568.001	201784.892
P107	194553.022	201800.164
P108	194538.843	201799.455
P109	194538.552	201805.280
P110	194543.390	201808.529
P111	194542.541	201825.508
P112	194541.692	201842.487
P113	194540.824	201859.857
P114	194572.767	201895.161
P115	194568.318	201899.187
P116	194577.265	201909.076
P117	194578.099	201908.322
P121	194637.916	201900.520
P122	194638.149	201895.850
P123	194640.147	201895.950
P124	194640.313	201892.629
P125	194640.850	201881.893
P126	194641.380	201871.285
P127	194641.910	201860.677
P128	194642.434	201850.190
P129	194642.959	201839.703
P130	194643.483	201829.216
P131	194643.957	201819.728
P132	194641.110	201816.582
P133	194614.144	201815.234
P134	194603.657	201814.710
P135	194595.667	201814.310
P136	194585.180	201813.786
P137	194558.213	201812.438
P138	194555.067	201815.285
P139	194554.593	201824.773
P140	194554.069	201835.260
P141	194552.846	201859.729
P142	194568.433	201876.957
P143	194575.478	201884.743
P144	194580.845	201890.675
P145	194587.890	201898.461
P146	194612.448	201899.247
P147	194612.847	201891.257
P148	194613.384	201880.520
P149	194610.834	201877.701
P150	194603.789	201869.915
P151	194603.306	201869.382
P152	194598.422	201863.983
P153	194593.228	201858.243
P154	194591.377	201856.197
P155	194583.496	201847.487
P156	194584.032	201836.757
P157	194584.556	201826.270
P158	194613.520	201827.718
P159	194612.996	201838.205
P160	194612.472	201848.692
P161	194611.948	201859.179
P162	194601.461	201858.655
P163	194593.471	201858.255
P164	194655.256	201834.052
P165	194654.282	201853.528
P166	194653.309	201873.004
P167	194652.335	201892.479
P168	194652.132	201896.549
P169	194654.130	201896.649
P170	194653.260	201914.052
P171	194678.221	201915.300
P172	194678.439	201908.803
P173	194656.229	201814.577
P174	194609.149	201802.969
P175	194606.303	201799.823
P176	194606.955	201786.786
P177	194607.656	201772.750
P020a	194581.754	201912.362
P042	194633.257	201788.100
P043	194633.916	201774.001
P044	194613.939	201773.049
P045	194616.781	201713.116
P046	194610.650	201712.848
P177a	194608.405	201757.768

Coördinatenlijst

Nr	X	Y
A01	194604.792	201712.591
A02	194604.735	201713.890
A03	194601.738	201713.759
A04	194601.795	201712.460
B01	194631.066	201913.974
B03	194630.938	201916.942
P001	194596.800	201712.242
P002	194593.921	201772.170
P002	194593.921	201772.170
P003	194568.699	201770.910
P004	194554.520	201770.201
P005	194540.336	201769.492
P006	194514.155	201768.183
P007	194512.868	201791.677
P008	194512.177	201803.940
P009	194445.647	201800.561
P010	194444.917	201803.527
P011	194515.674	201807.122
P012	194513.693	201824.066
P013	194512.276	201836.191
P014	194511.445	201839.860
P016	194511.286	201840.967
P017	194508.792	201858.256
P018	194499.983	201909.781
P019	194536.570	201910.925
P024	194660.738	201918.431
P025	194682.704	201919.529
P026	194692.749	201920.094
P027	194732.719	201921.661
P028	194732.900	201917.665
P030	194692.930	201916.098
P031	194682.916	201915.535
P032	194683.133	201909.038
P033	194683.815	201894.053
P034	194684.706	201874.573
P035	194685.645	201855.096
P036	194686.488	201835.614
P037	194687.379	201816.134
P038	194687.408	201815.505
P039	194656.248	201814.214
P040	194656.691	201805.345
P041	194632.502	201804.136
P042	194633.257	201788.100
P043	194633.916	201774.001
P044	194613.939	201773.049
P045	194616.781	201713.116
P046	194610.650	201712.848